

Elizabeth Romhild
for

 SONITE





ELIZABETH ROMHILD

Eclectic art portrayed on designer products. Such phrase would accurately define what Elizabeth Romhild does and what Elizabeth Romhild Design is about, since we cannot separate Elizabeth's distinct, deeply creative and individual artistic sensitivity from the wide variety of products, from tableware to fine jewelry, that embody the expression of her art.





A designer's journey

Elizabeth Romhild was born in Copenhagen in 1960. Her father was Armenian and her mother was Danish. She spent her childhood in Iran. She went to school in England, and subsequently lived in Saudi Arabia, the U.S. and Indonesia.

No wonder, her unique heritage has instilled the creativity of this self taught painter, sculptor and designer with a distinct individuality.

She has been living and working in Bangkok, Thailand, since 1988. Her artwork is part of private collections worldwide. Since 1986 she has participated in various solo and group exhibitions in Indonesia, Thailand, Singapore, Italy and the United States.

Romhild's artwork has travelled through many phases on a continuous road of self development and discovery. At the age of 26, this Danish-Armenian artist began painting realistic portraits, later moving on to seascapes and landscapes. Even within the portrait period, her art gradually became bolder and more simplified in the treatment of the female subject both in the two dimensional form of her painting and the three dimensional forms of her bronze sculptures.

Energized by her wide-ranging international experiences and artistic endeavors, Romhild has been offering the art world a constantly evolving and fascinating body of work that reflects who she is as an artist and as a person.

Throughout her already long artistic career, Romhild has continued to defy her boundaries with an ever expanding range of work that reflects her quest for discovery not only in the world around her but also in her own heart while searching for answers to the cosmic mystery and to her own self queries. At present she seems to have turned her gaze away from the external subject to focus her attention on the inspiring calls within herself.

The exploration of her darker underside and the reflection on her own soul are conveyed through her current treatment of the light and the use of the darker tones of her palette.

Elizabeth herself is well aware of this: "My brand is my inner self, reflecting my eclectic life in different countries and cultures I have experienced and lived in".

High quality, art, craftsmanship, and usability make up the recognizable statement that Elizabeth manages to turn each object into. Also common to all of them is an air of luxury and elegance in an apparent casual style that is at the same time fun and appealing, always leaving room for discussion and interpretation.

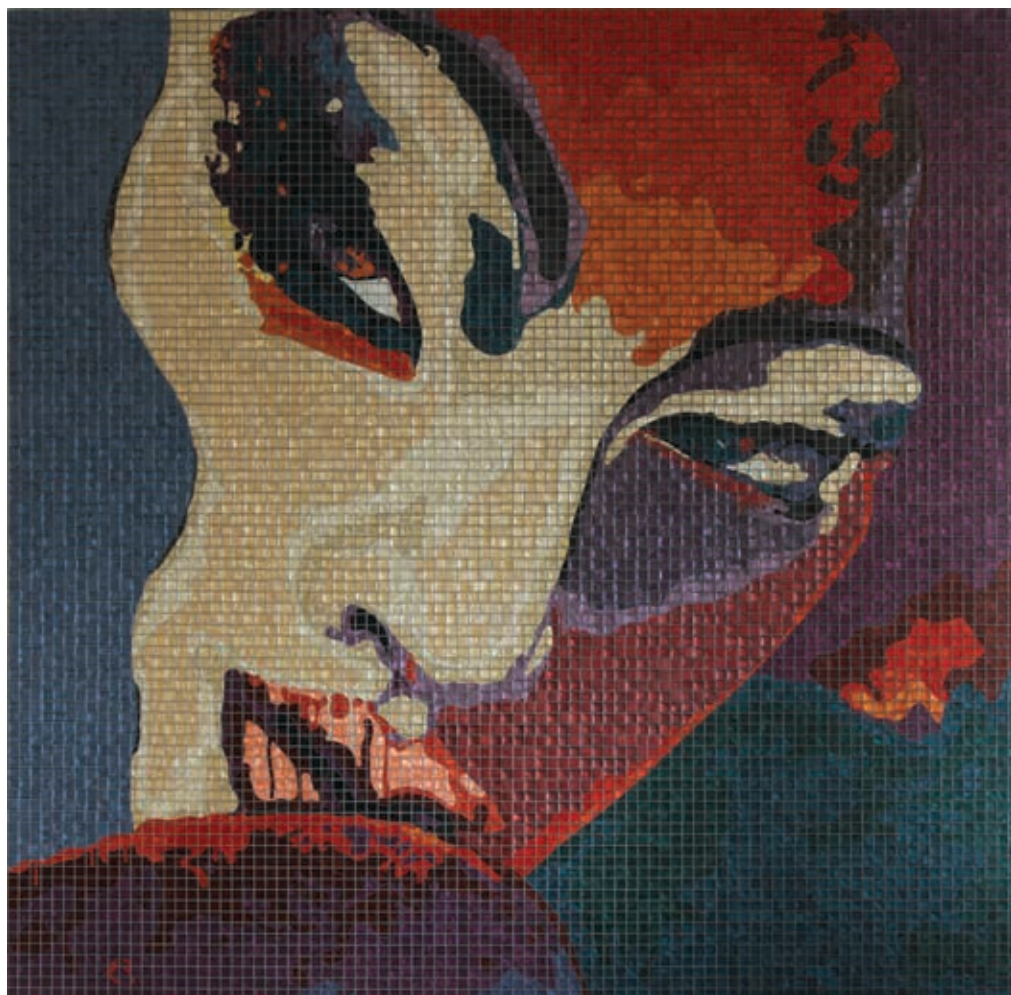
As far as her inspiration is concerned, there is no better way to explain it than using her own words: "Women and sensuality, magnetically attractive and open to the joy de vivre; energizing music, feasts and colors; the mystique of the mask, are all my source of inspiration".





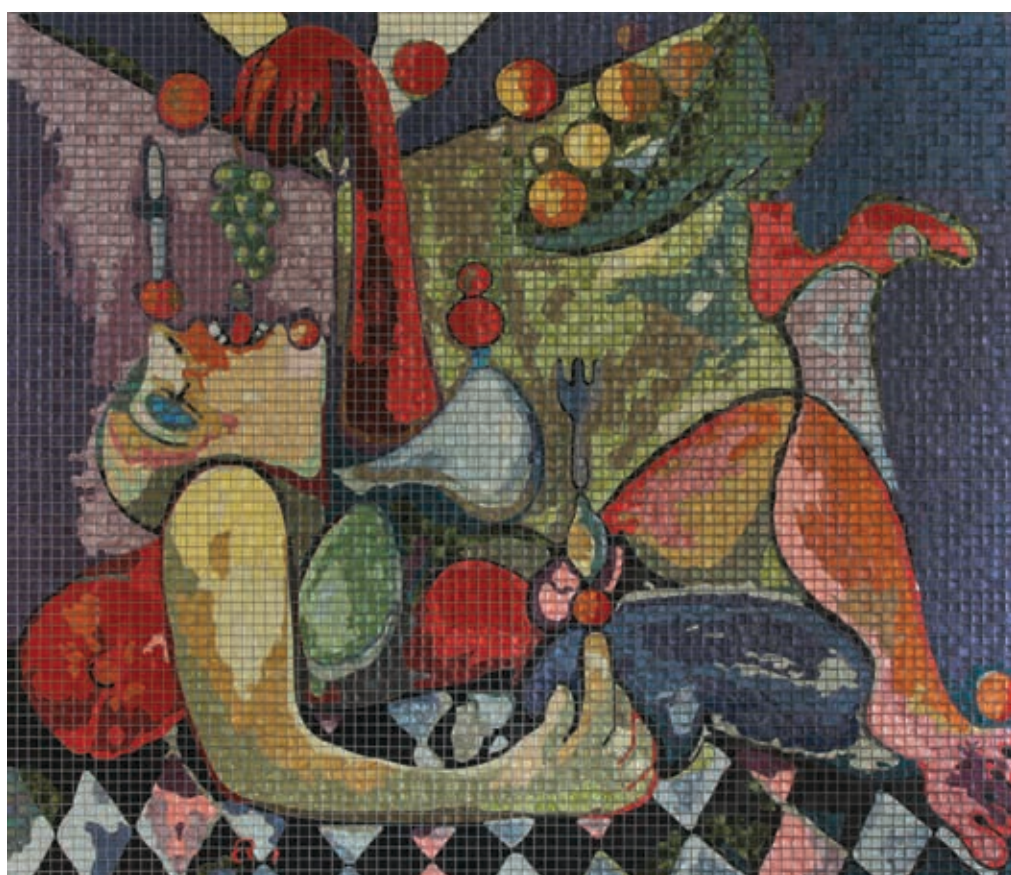
GALLERY

The most striking symbiosis of a woman and her artwork; the perfect match between a multicultural background and a multicoloured production; the most delicate balance between outward inspiration and inside search. All of it displayed through paintings, sculptures and everyday objects turned into art!



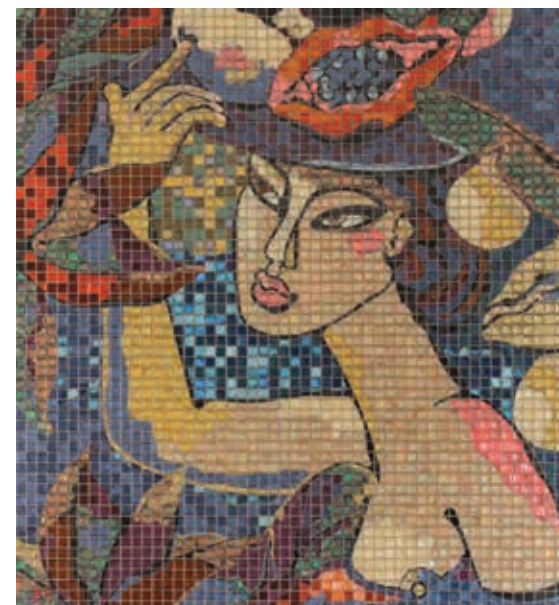
Explores the untold stories and expressions of the feminine gaze.

Ruby
150 x 150 cm

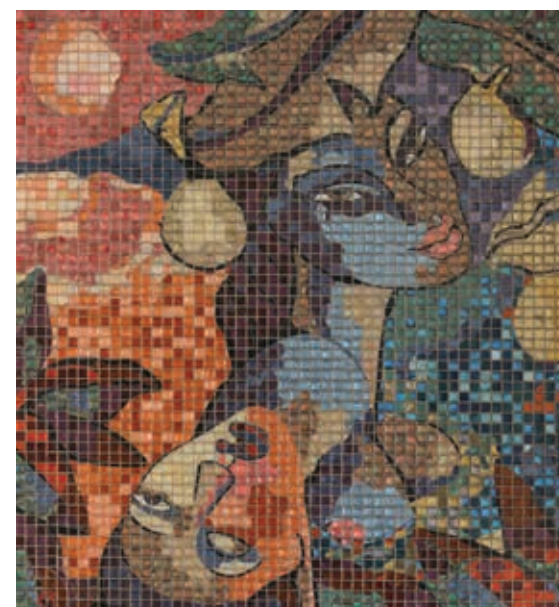


Female eroticism in a bold yet graceful nuances expressing fervid passion, uninhibited sensuality, and blatant indulgence

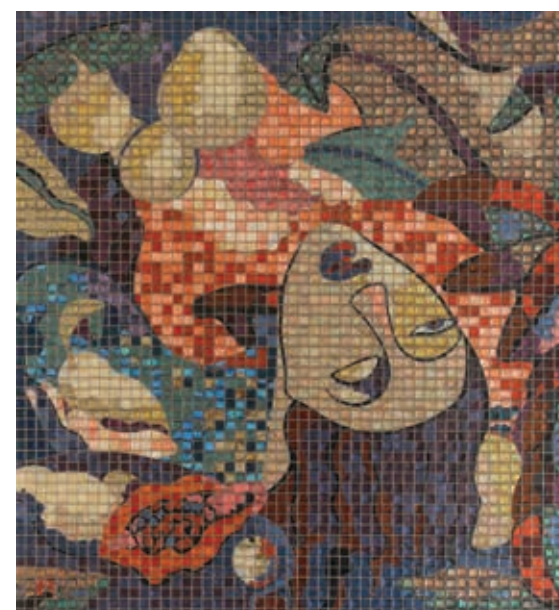
Circus of Fruits
150 x 130 cm



Island Love (triptych) 1
65 x 60 cm

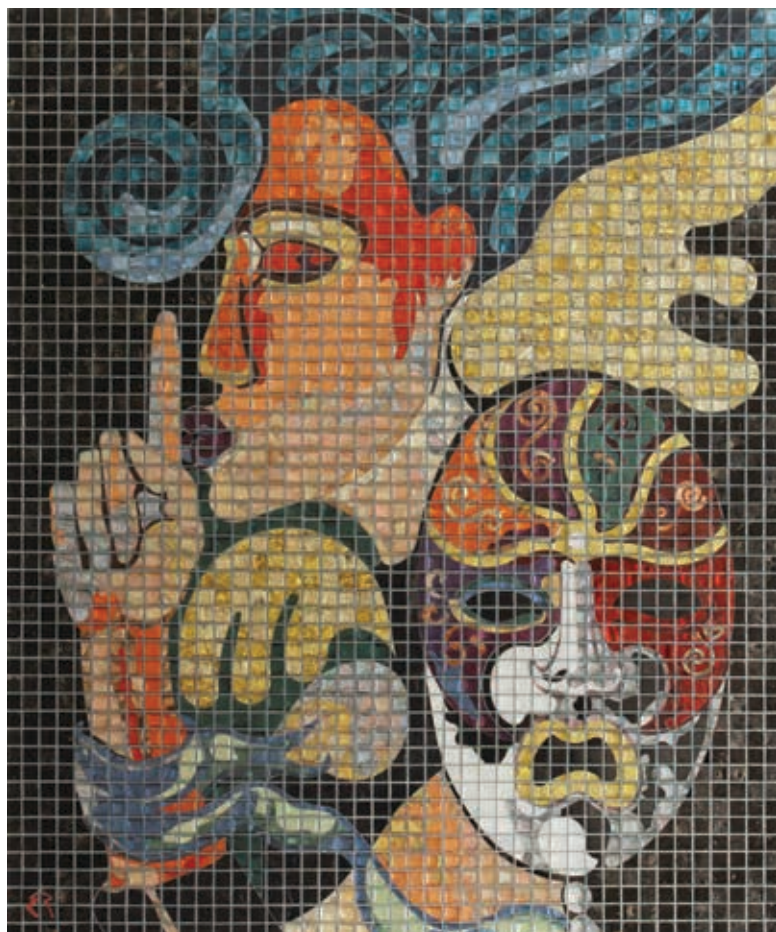


Island Love (triptych) 2
65 x 60 cm

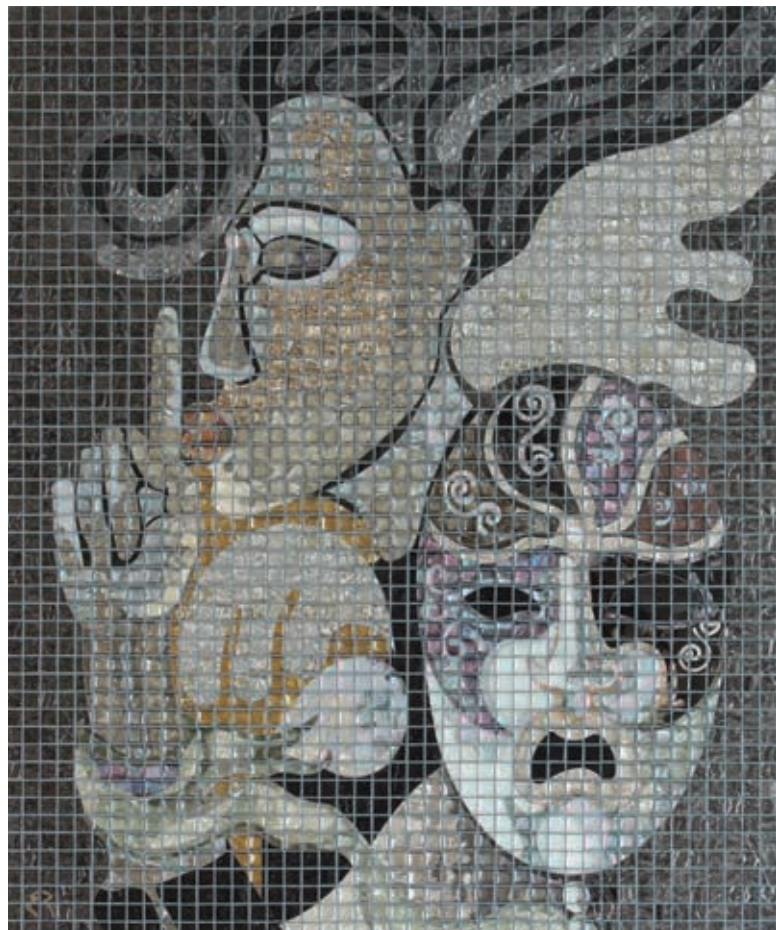


Bare nipples stare out amidst intertwined feminine bodies while women with mystical cat-like eyes luxuriating in fervent daydreams

Island Love (triptych) 3
65 x 60 cm



Opera
50 x 60 cm



Poetically lyrical blend of classicism and modernism, operatic costuming and theatrical carnival revealing the baroque sophistication of a Venetian ball

Opera - Black and White
50 x 60 cm

Sonite Head Office

Sonite Innovative Surfaces Co., Ltd.
253/43 Soi Latphrao 80 (Section 22)
Latphrao Rd., Wangthonglang,
Bangkok 10310 Thailand

T: +66 2935 5575 (ext.6)
F: +66 2935 5883

Sonite North America

Sonite Innovative Surfaces
Marketing Office
865 Production Place
Newport Beach, CA - 92663 USA.

T: +1 949 612 7173

info@sonitesurfaces.com
www.sonitesurfaces.com

